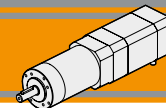




**Motoriduttori brushless CC epicicloidali**  
**Brushless DC planetary gearmotors**



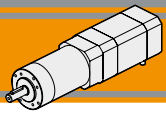




<b>Indice</b>	<b>Index</b>	<b>Pag. Page</b>
Caratteristiche tecniche	<i>Technical features</i>	<b>F2</b>
Designazione	<i>Classification</i>	<b>F2</b>
Simbologia	<i>Symbols</i>	<b>F2</b>
Lubrificazione e temperatura	<i>Lubrication and temperature</i>	<b>F3</b>
Carichi radiali	<i>Radial loads</i>	<b>F3</b>
Rapporti	<i>Ratios</i>	<b>F3</b>
P52 con motore brushless BLS 022.240	<i>P52 with brushless motor BLS 022.240</i>	<b>F4</b>
P52 con motore brushless BLS 043.240	<i>P52 with brushless motor BLS 043.240</i>	<b>F6</b>
P62 con motore brushless BL 070.480	<i>P62 with brushless motor BL 070.480</i>	<b>F8</b>
P62 con motore brushless BL 140.480	<i>P62 with brushless motor BL 140.480</i>	<b>F8</b>
P81 con motore brushless BL 140.480	<i>P81 with brushless motor BL 140.480</i>	<b>F10</b>
P81 con motore brushless BL 210.480	<i>P81 with brushless motor BL 210.480</i>	<b>F10</b>
Dati tecnici	<i>Technical data</i>	<b>F12</b>
Dimensioni P con flange motore AS	<i>P dimensions with motor flanges AS</i>	<b>F13</b>
Flange uscita	<i>Output flange</i>	<b>F15</b>

Questa sezione annulla e sostituisce ogni precedente edizione o revisione. Qualora questa sezione non Vi sia giunta in distribuzione controllata, l'aggiornamento dei dati ivi contenuto non è assicurato. **In tal caso la versione più aggiornata è disponibile sul nostro sito internet [www.transtecno.com](http://www.transtecno.com)**

*This section replaces any previous edition and revision. If you obtained this catalogue other than through controlled distribution channels, the most up to date content is not guaranteed. **In this case the latest version is available on our web site [www.transtecno.com](http://www.transtecno.com)***



# BLP

# Motoriduttori brushless CC epicicloidali Brushless DC planetary gearmotors

## Caratteristiche tecniche

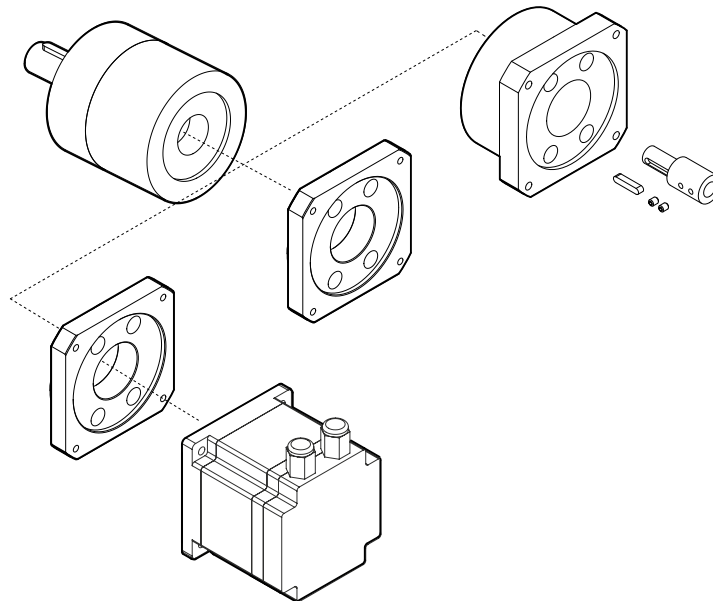
## Technical features

Le caratteristiche principali dei motoriduttori brushless CC epicicloidali della serie BLP sono:

- Alimentazione in bassa tensione 24/36/48 Vcc
- Protezione IP54
- Coppie motori disponibili da 0.22 Nm a 2.1 Nm
- Lubrificazione permanente a grasso
- Completamente in metallo
- Doppio cuscinetto su albero di uscita
- Disponibili anche nella versione con solo riduttore, sia con flangia di entrata standard che con flangia e manicotto dedicati

The main features of brushless DC planetary gearmotors BLP range are:

- Low voltage power supply 24/36/48 Vdc
- Protection IP54
- Motor torque ratings available from 0.22 Nm up to 2.1 Nm
- Permanent grease long life lubrication
- Completely made out of metal
- Double ball bearing on output shaft
- Gearbox only version also available, with either standard input flange or customized flange and coupling



## Designazione

## Classification

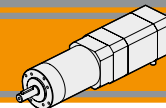
RIDUTTORE / GEARBOX			
P	52	2	46
Tipo Type	Grandezza Size	Stadi riduttore Gearbox stages	Rapporto in Ratio in
P	52 62 81	1 2 3	Vedere tabelle See tables

MOTORE / MOTOR	
BL070.480	48V
Tipo Type	Tensione Voltage
BLS022.240	24V-36V
BLS043.240	24V-36V
BL070.480	48V
BL140.480	48V
BL210.480	48V

## Simbologia

## Symbols

Ns	n° stadi / No. stages	Mn <sub>2</sub>	[Nm]	Coppia nominale in uscita in funzione di Pn1 Nominal output torque referred to Pn1
ir	rapporto reale / real ratio	V	[V]	Tensione / Voltage
M <sub>2</sub>	[Nm] coppia in uscita output torque	n <sub>1MAX</sub>	[Rpm]	Velocità max entrata / Max input speed
Rd	rendimento dinamico / efficiency	n <sub>2</sub>	[Rpm]	Velocità in uscita / Output Speed
A <sub>2</sub>	[N] Carico assiale ammissibile in uscita Permitted output axial load	IP		Grado di protezione / Enclosure protection
R <sub>2</sub>	[N] Carico radiale ammissibile in uscita Permitted output radial load	Kg		Peso / Weight
Pn <sub>1</sub>	[kW] Potenza nominale in entrata Nominal input power	sf		Fattore di servizio / Service Factor



**Lubrificazione e temperatura**

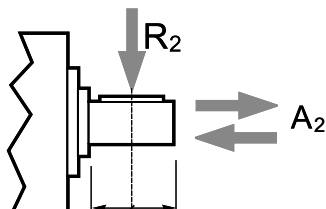
**Lubrication and temperature**

I motoriduttori epicicloidali BLP sono lubrificati in modo permanente, non richiedono quindi ulteriore manutenzione. Questo gli consente di essere installati praticamente ovunque. Temperatura ambiente 0 ÷ 40 °C (in assenza di congelamento ed in assenza di condensa). Per temperature diverse, contattare nostro UT.

Planetary BLP gearmotors are life-time lubricated with grease, therefore they are maintenance free. They can be installed in any location. Ambient temperature 0 ÷ 40 °C (in the absence of freezing and condensation). For temperature outside this range please contact our technical dept.

**Carichi radiali**

**Radial loads**



Ns	Carichi Radiali R <sub>2</sub> [N] / Radial Load R <sub>2</sub> [N]		
	P52	P62	P81
1	200	240	400
2	320	360	600
3	450	520	1000

Ns	Carichi Assiali A <sub>2</sub> [N] / Axial Load A <sub>2</sub> [N]		
	P52	P62	P81
1	60	70	80
2	100	100	120
3	150	150	200

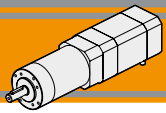
**Rapporti**

**Ratios**

Ns	P 52 / 62 / 81		Rd	P 52	P 62	P 81
	in	ir		kg	kg	kg
1	<b>4</b>	<b>3.7</b>	0.8	0.7	0.8	1.8
	4	4.28				
	5	5.18				
	<b>7</b>	<b>6.75</b>				
2	<b>14</b>	<b>13.73</b>	0.75	0.9	1.2	2.5
	16	15.88				
	18	18.36				
	19	19.2				
	22	22.2				
	<b>25</b>	<b>25.01</b>				
	27	26.85				
	29	28.93				
	35	34.97				
	<b>46</b>	<b>45.56</b>				
3	51	50.89	0.7	1.1	1.6	3.2
	59	58.85				
	<b>68</b>	<b>68.06</b>				
	71	71.16				
	79	78.71				
	<b>93</b>	<b>92.7</b>				
	95	95.17				
	100	99.5				
	107	107.2				
	115	115.07				
	124	123.97				
	130	129.62				
	139	139.13				
	150	149.9				
	<b>169</b>	<b>168.84</b>				
	181	181.24				
195	195.26					
236	236.09					
<b>308</b>	<b>307.54</b>					
4	a richiesta	on request				

**Rapporti preferenziali**  
Preferred ratios

Disponibile a 4 stadi con rapporti fino a 2076  
Available 4 stages with ratio up to 2076



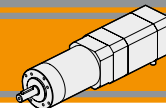
**P52 con motore brushless**

**P52 with brushless motor**

P52			BLS022.240														
			24V						36V								
Ns	ir	in	n <sub>2MIN</sub> [ rpm ]			n <sub>2MAX</sub> [ rpm ]			n <sub>1MAX</sub> [ rpm ]	n <sub>2MIN</sub> [ rpm ]			n <sub>2MAX</sub> [ rpm ]			n <sub>1MAX</sub> [ rpm ]	
			M <sub>2</sub> [Nm]	sf		M <sub>2</sub> [Nm]	sf			M <sub>2</sub> [Nm]	sf		M <sub>2</sub> [Nm]	sf			
1	<b>3.7</b>	<b>4</b>	81	0.7	9.0	811	0.7	6.1	3000	108	0.7	9.0	1081	0.7	5.4	4000	
	4.28	4	70	0.8	7.8	701	0.8	5.3		93	0.8	7.8	935	0.8	4.7		
	5.18	5	58	0.9	6.4	579	0.9	4.4		77	0.9	6.4	772	0.9	3.9		
	<b>6.75</b>	<b>7</b>	44	1.2	4.9	444	1.2	3.3		59	1.2	4.9	593	1.2	3.0		
2	<b>13.73</b>	<b>14</b>	22	2.3	7.6	218	2.3	5.2		29	2.3	7.6	291	2.3	4.6		
	15.88	16	19	2.6	6.6	189	2.6	4.5		25	2.6	6.6	252	2.6	4.0		
	18.36	18	16	3.0	5.7	163	3.0	3.9		22	3.0	5.7	218	3.0	3.4		
	19.2	19	16	3.2	5.4	156	3.2	3.7		21	3.2	5.4	208	3.2	3.3		
	22.2	22	14	3.7	4.7	135	3.7	3.2		18	3.7	4.7	180	3.7	2.8		
	<b>25.01</b>	<b>25</b>	12	4.1	4.2	120	4.1	2.8		16	4.1	4.2	160	4.1	2.5		
	26.9	27	11	4.4	3.9	112	4.4	2.6		15	4.4	3.9	149	4.4	2.3		
	28.9	29	10	4.8	3.6	104	4.8	2.5		14	4.8	3.6	138	4.8	2.2		
	35.0	35	8.6	5.8	3.0	86	5.8	2.0		11	5.8	3.0	114	5.8	1.8		
	<b>45.6</b>	<b>46</b>	6.6	7.5	2.3	66	7.5	1.6		8.8	7.5	2.3	88	7.5	1.4		
	3	50.9	51	5.9	8	4.7	59	7.8		3.2	7.9	8	4.7	79	7.8		2.8
		58.9	59	5.1	9	4.1	51	9.1		2.8	6.8	9	4.1	68	9.1		2.4
<b>68.1</b>		<b>68</b>	4.4	10	3.5	44	10	2.4	5.9	10	3.5	59	10	2.1			
71.2		71	4.2	11	3.4	42	11	2.3	5.6	11	3.4	56	11	2.0			
78.7		79	3.8	12	3.0	38	12	2.1	5.1	12	3.0	51	12	1.8			
<b>92.7</b>		<b>93</b>	3.2	14	2.6	32	14	1.7	4.3	14	2.6	43	14	1.5			
95.2		95	3.2	15	2.5	32	15	1.7	4.2	15	2.5	42	15	1.5			
99.5		100	3.0	15	2.4	30	15	1.6	4.0	15	2.4	40	15	1.4			
107.2		107	2.8	17	2.2	28	17	1.5	3.7	17	2.2	37	17	1.3			
115.07		115	2.6	18	2.1	26	18	1.4	3.5	18	2.1	35	18	1.2			
123.97		124	2.4	19	1.9	24	19	1.3	3.2	19	1.9	32	19	1.2			
129.62		130	2.3	20	1.8	23	20	1.3	3.1	20	1.8	31	20	1.1			
139.13		139	2.2	21	1.7	22	21	1.2	2.9	21	1.7	29	21	1.0			
149.9		150	2.0	23	1.6	20	23	1.1	2.7	23	1.6	27	23	1.0			
<b>168.84</b>		<b>169</b>	1.8	26	1.4	18	26	1.0	2.4	26	1.4	24	26	0.8			
181.24		181	1.7	28	1.3	17	28	0.9	2.2	28	1.3	22	28	0.8			
195.26	195	1.5	30	1.2	15	30	0.8	2.0	30	1.2	20	30	0.7				
236.09	236	1.3	36	1.0	13	36	0.7	1.7	36	1.0	17	31	0.7				
<b>307.54</b>	<b>308</b>	1.0	47	0.8	9.8	36	0.7	1.3	47	0.8	13	31	0.7				

**Rapporti preferenziali**  
*Preferred ratios*

**Attenzione: superamento della coppia nominale supportata dal riduttore per servizio S1.**  
Contattare il ns. servizio tecnico  
*Attention: rated torque withstood by gear reducer for service in S1 is exceeded.*  
*Please, contact our technical office.*



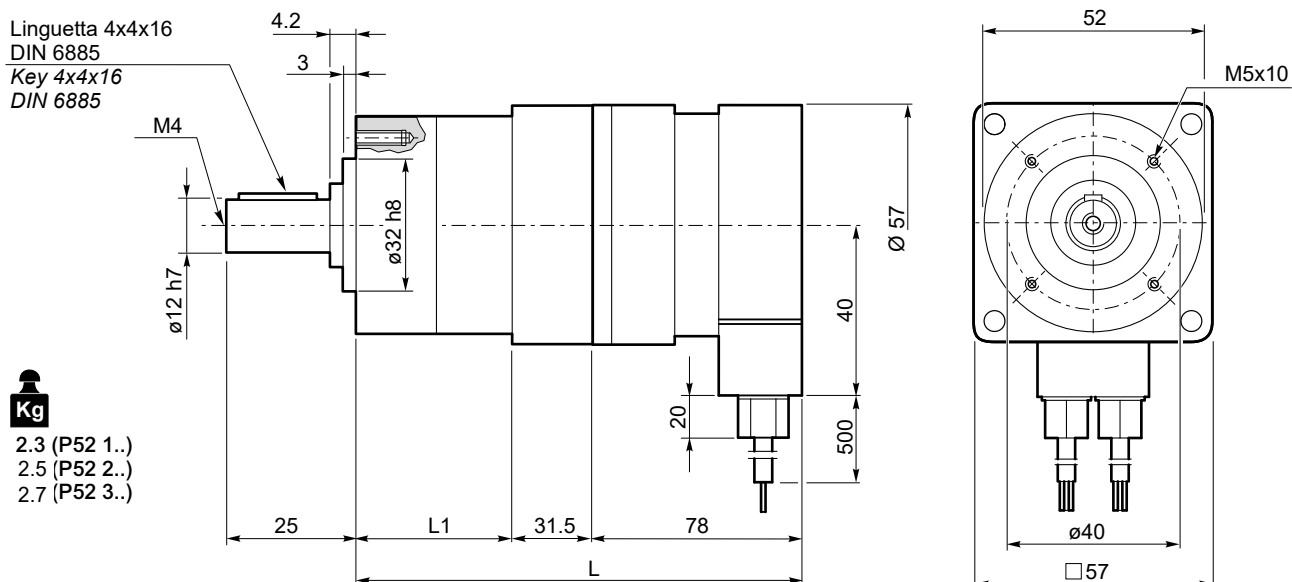
**P52 con motore brushless**

**P52 with brushless motor**

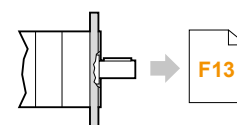
Tipo Type	Numero di poli Number of poles	Numero di fasi Number of phase	Tensione Rated voltage [ V ]	Numero di giri Rated speed [ rpm ]	Coppia nominale Rated torque [ Nm ]	Potenza nominale Rated power [ W ]
BLS022.240	4	3	36	4000	0.22	92
			24	3000		70
Tipo Type	Coppia massima Peak torque [ Nm ]	Corrente nominale Rated current [ A ]	Resistenza Resistance [ ohm ]	Induttanza Inductance [ mH ]	Corrente massima Peak current [ A ]	Peso Weight [ kg ]
BLS022.240	0.44	3.7	0.64	3.1	7.4	0.72



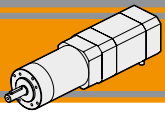
**P52..  
+  
BLS022.240**



P52	BLS022.240		
	Ns	L1	L
	1	46	155.5
	2	60	169.5
	3	74	183.5



**P52.. AS...**

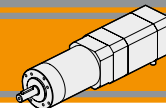


P52			BLS043.240													
			24V						36V							
Ns	ir	in	n <sub>2MIN</sub> [ rpm ]			n <sub>2MAX</sub> [ rpm ]			n <sub>1MAX</sub> [ rpm ]	n <sub>2MIN</sub> [ rpm ]			n <sub>2MAX</sub> [ rpm ]			n <sub>1MAX</sub> [ rpm ]
			M <sub>2</sub> [Nm]	sf		M <sub>2</sub> [Nm]	sf			M <sub>2</sub> [Nm]	sf		M <sub>2</sub> [Nm]	sf		
1	<b>3.7</b>	<b>4</b>	81	1.3	4.6	811	1.3	3.1	3000	108	1.3	4.6	1081	1.3	2.8	4000
	4.28	4	70	1.5	4.0	701	1.5	2.7		93	1.5	4.0	935	1.5	2.4	
	5.18	5	58	1.8	3.3	579	1.8	2.2		77	1.8	3.3	772	1.8	2.0	
	<b>6.75</b>	<b>7</b>	44	2.3	2.5	444	2.3	1.7		59	2.3	2.5	593	2.3	1.5	
2	<b>13.73</b>	<b>14</b>	22	4.4	3.9	218	4.4	2.6	3000	29	4.4	3.9	291	4.4	2.3	4000
	15.88	16	19	5.1	3.4	189	5.1	2.3		25	5.1	3.4	252	5.1	2.0	
	18.36	18	16	5.9	2.9	163	5.9	2.0		22	5.9	2.9	218	5.9	1.7	
	19.2	19	16	6.2	2.8	156	6.2	1.9		21	6.2	2.8	208	6.2	1.7	
	22.2	22	14	7.2	2.4	135	7.2	1.6		18	7.2	2.4	180	7.2	1.4	
	<b>25.01</b>	<b>25</b>	12	8.1	2.1	120	8.1	1.5		16	8.1	2.1	160	8.1	1.3	
	26.9	27	11	8.7	2.0	112	8.7	1.4		15	8.7	2.0	149	8.7	1.2	
	28.9	29	10	9.3	1.8	104	9.3	1.3		14	9.3	1.8	138	9.3	1.1	
	35.0	35	8.6	11	1.5	86	11.3	1.0		11	11	1.5	114	11	0.9	
	<b>45.6</b>	<b>46</b>	6.6	15	1.2	66	14.7	0.8		8.8	15	1.2	88	15	0.7	
	50.9	51	5.9	15	2.4	59	15.3	1.6		7.9	15	2.4	79	15	1.4	
	58.9	59	5.1	18	2.1	51	17.7	1.4		6.8	18	2.1	68	18	1.2	
3	<b>68.1</b>	<b>68</b>	4.4	20	1.8	44	20	1.2	5.9	20	1.8	59	20	1.1	4000	
	71.2	71	4.2	21	1.7	42	21	1.2	5.6	21	1.7	56	21	1.0		
	78.7	79	3.8	24	1.6	38	24	1.1	5.1	24	1.6	51	24	0.9		
	<b>92.7</b>	<b>93</b>	3.2	28	1.3	32	28	0.9	4.3	28	1.3	43	28	0.8		
	95.2	95	3.2	29	1.3	32	29	0.9	4.2	29	1.3	42	29	0.8		
	99.5	100	3.0	30	1.2	30	30	0.8	4.0	30	1.2	40	30	0.7		
	107.2	107	2.8	32	1.1	28	32	0.8	3.7	32	1.1	37	31	0.7		
	115.07	115	2.6	35	1.1	26	35	0.7	3.5	35	1.1	35	31	0.7		
	123.97	124	2.4	37	1.0	24	36	0.7	3.2	37	1.0	32	31	0.7		
	129.62	130	2.3	39	0.9	23	36	0.7	3.1	39	0.9	31	31	0.7		
	139.13	139	2.2	42	0.9	22	36	0.7	2.9	42	0.9	29	31	0.7		
	149.9	150	2.0	45	0.8	20	36	0.7	2.7	45	0.8	27	31	0.7		
	<b>168.84</b>	<b>169</b>	1.8	51	0.7	18	36	0.7	2.4	51	0.7	24	31	0.7		
	181.24	181	1.7	53	0.7	17	36	0.7	2.2	53	0.7	22	31	0.7		
	195.26	195	1.5	53	0.7	15	36	0.7	2.0	53	0.7	20	31	0.7		
	236.09	236	1.3	53	0.7	13	36	0.7	1.7	53	0.7	17	31	0.7		
<b>307.54</b>	<b>308</b>	1.0	53	0.7	9.8	36	0.7	1.3	53	0.7	13	31	0.7			

**Rapporti preferenziali**  
*Preferred ratios*

**Attenzione: superamento della coppia nominale supportata dal riduttore per servizio S1.**  
**Contattare il ns. servizio tecnico**  
*Attention: rated torque withstood by gear reducer for service in S1 is exceeded.*  
*Please, contact our technical office.*





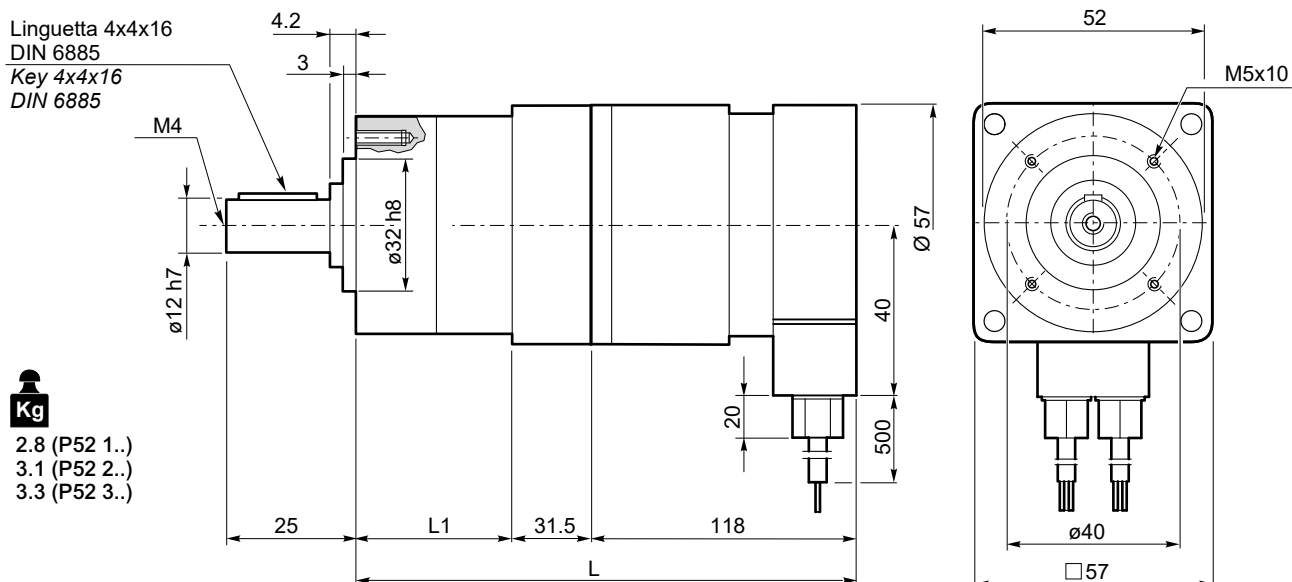
**P52 con motore brushless**

**P52 with brushless motor**

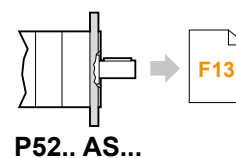
Tipo Type	Numero di poli Number of poles	Numero di fasi Number of phase	Tensione Rated voltage [ V ]	Numero di giri Rated speed [ rpm ]	Coppia nominale Rated torque [ Nm ]	Potenza nominale Rated power [ W ]
BLS043.240	4	3	36	4000	0.43	180
			24	3000		130
Tipo Type	Coppia massima Peak torque [ Nm ]	Corrente nominale Rated current [ A ]	Resistenza Resistance [ ohm ]	Induttanza Inductance [ mH ]	Corrente massima Peak current [ A ]	Peso Weight [ kg ]
BL043.240	0.86	6	0.35	1	12.0	1.25

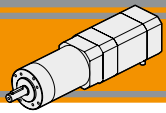


**P52..  
+  
BLS043.240**



P52	BLS043.240		
	Ns	L1	L
	1	46	195.5
	2	60	209.5
	3	74	223.5

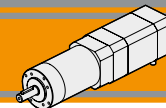




P62			BL070.480						BL140.480								
			48V						48V								
Ns	ir	in	n <sub>2MIN</sub> [ rpm ]			n <sub>2MAX</sub> [ rpm ]			n <sub>1MAX</sub> [ rpm ]	n <sub>2MIN</sub> [ rpm ]			n <sub>2MAX</sub> [ rpm ]			n <sub>1MAX</sub> [ rpm ]	
			M <sub>2</sub> [Nm]	sf		M <sub>2</sub> [Nm]	sf			M <sub>2</sub> [Nm]	sf		M <sub>2</sub> [Nm]	sf			
1	<b>3.7</b>	<b>4</b>	81	2.1	5.6	811	2.1	3.8	3000	81	4.1	2.8	811	4.1	1.9	3000	
	4.28	4	70	2.4	4.8	701	2.4	3.3		70	4.8	2.4	701	4.8	1.6		
	5.18	5	58	2.9	4.0	579	2.9	2.7		58	5.8	2.0	579	5.8	1.3		
	<b>6.75</b>	<b>7</b>	44	3.8	3.0	444	3.8	2.1		44	7.6	1.5	444	7.6	1.0		
2	<b>13.73</b>	<b>14</b>	22	7.2	5.1	218	7.2	3.5		22	14.4	2.6	218	14.4	1.7		
	15.88	16	19	8.3	4.4	189	8.3	3.0		19	16.7	2.2	189	16.7	1.5		
	18.36	18	16	9.6	3.8	163	9.6	2.6		16	19.3	1.9	163	19.3	1.3		
	19.2	19	16	10	3.7	156	10	2.5		16	20	1.8	156	20	1.2		
	22.2	22	14	12	3.2	135	12	2.1		14	23	1.6	135	23	1.1		
	<b>25.01</b>	<b>25</b>	12	13	2.8	120	13	1.9		12	26	1.4	120	26	1.0		
	26.9	27	11	14	2.6	112	14	1.8		11	28	1.3	112	28	0.9		
	28.9	29	10	15	2.4	104	15	1.6		10	30	1.2	104	30	0.8		
	35.0	35	8.6	18	2.0	86	18	1.4		8.6	37	1.0	86	36	0.7		
	<b>45.6</b>	<b>46</b>	6.6	24	1.5	66	24	1.0		6.6	48	0.8	66	36	0.7		
	3	50.9	51	5.9	25	3.0	59	25		2.0	5.9	50	1.5	59	50		1.0
		58.9	59	5.1	29	2.6	51	29		1.7	5.1	58	1.3	51	58		0.9
<b>68.1</b>		<b>68</b>	4.4	33	2.2	44	33	1.5		4.4	67	1.1	44	67	0.7		
71.2		71	4.2	35	2.1	42	35	1.4		4.2	70	1.1	42	70	0.7		
78.7		79	3.8	39	1.9	38	39	1.3		3.8	77	1.0	38	71	0.7		
<b>92.7</b>		<b>93</b>	3.2	45	1.6	32	45	1.1		3.2	91	0.8	32	71	0.7		
95.2		95	3.2	47	1.6	32	47	1.1	3.2	93	0.8	32	71	0.7			
99.5		100	3.0	49	1.5	30	49	1.0	3.0	98	0.8	30	71	0.7			
107.2		107	2.8	53	1.4	28	53	1.0	2.8	105	0.7	28	71	0.7			
115.07		115	2.6	56	1.3	26	56	0.9	2.6	105	0.7	26	71	0.7			
123.97		124	2.4	61	1.2	24	61	0.8	2.4	105	0.7	24	71	0.7			
129.62		130	2.3	64	1.2	23	64	0.8	2.3	105	0.7	23	71	0.7			
139.13		139	2.2	68	1.1	22	68	0.7	2.2	105	0.7	22	71	0.7			
149.9		150	2.0	73	1.0	20	71	0.7	2.0	105	0.7	20	71	0.7			
<b>168.84</b>		<b>169</b>	1.8	83	0.9	18	71	0.7	1.8	105	0.7	18	71	0.7			
181.24		181	1.7	89	0.8	17	71	0.7	1.7	105	0.7	17	71	0.7			
195.26	195	1.5	96	0.8	15	71	0.7	1.5	105	0.7	15	71	0.7				
236.09	236	1.3	105	0.7	13	71	0.7	1.3	105	0.7	13	71	0.7				
<b>307.54</b>	<b>308</b>	1.0	105	0.7	9.8	71	0.7	1.0	105	0.7	9.8	71	0.7				

**Rapporti preferenziali**  
*Preferred ratios*

**Attenzione: superamento della coppia nominale supportata dal riduttore per servizio S1.**  
**Contattare il ns. servizio tecnico**  
*Attention: rated torque withstood by gear reducer for service in S1 is exceeded.*  
*Please, contact our technical office.*



**P62 con motore brushless**

**P62 with brushless motor**

Tipo Type	Numero di poli Number of poles	Numero di fasi Number of phase	Tensione Rated voltage [ V ]	Numero di giri Rated speed [ rpm ]	Coppia nominale Rated torque [ Nm ]	Potenza nominale Rated power [ W ]
BL070.480	8	3	48	3000	0.70	220
BL140.480	8	3	48	3000	1.4	440
Tipo Type	Coppia massima Peak torque [ Nm ]	Corrente nominale Rated current [ A ]	Resistenza Resistance [ ohm ]	Induttanza Inductance [ mH ]	Corrente massima Peak current [ A ]	Peso Weight [ kg ]
BL070.480	1.4	6.5	0.34	1.0	13.0	2.1
BL140.480	2.8	13.0	0.16	0.5	26	3.15

Azionamenti  
Drives

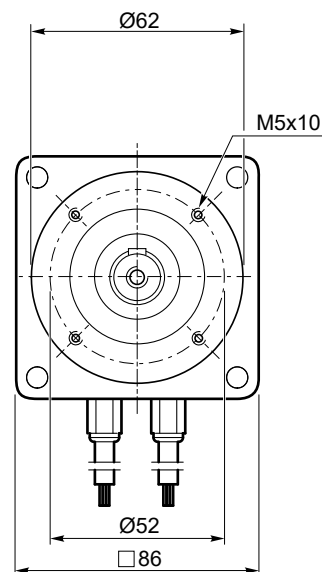
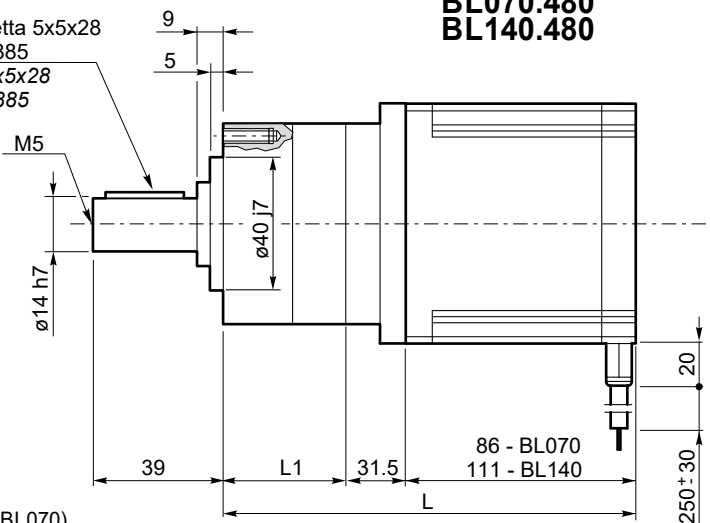


**P62..  
+  
BL070.480  
BL140.480**

Linguetta 5x5x28  
DIN 6885  
Key 5x5x28  
DIN 6885

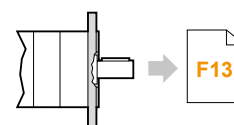


- 2.9 (P62 1..+ BL070)
- 3.3 (P62 2..+BL070)
- 3.7 (P62 3..+BL070)
- 3.9 (P62 1..+BL140)
- 4.3 (P62 2..+BL140)
- 4.7 (P62 3..+BL140)

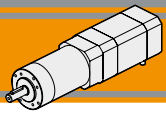


**BLP**

P62	Ns	L1	BL 070.480	BL 140.480
			L	L
	1	46	163.5	188.5
	2	62	179.5	204.5
	3	78	195.5	220.5



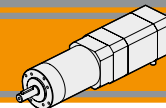
**P62.. AS...**



P81			BL140.480						BL210.480							
			48V						48V							
Ns	ir	in	n <sub>2MIN</sub> [ rpm ]			n <sub>2MAX</sub> [ rpm ]			n <sub>1MAX</sub> [ rpm ]	n <sub>2MIN</sub> [ rpm ]			n <sub>2MAX</sub> [ rpm ]			n <sub>1MAX</sub> [ rpm ]
			M <sub>2</sub> [Nm]	sf		M <sub>2</sub> [Nm]	sf			M <sub>2</sub> [Nm]	sf		M <sub>2</sub> [Nm]	sf		
1	<b>3.70</b>	<b>4</b>	81	4.1	6.9	811	4.1	4.7	3000	81	6.2	4.6	811	6.2	3.1	3000
	4.28	4	70	4.8	6.0	701	4.8	4.1		70	7.2	4.0	701	7.2	2.7	
	5.18	5	58	5.8	5.0	579	5.8	3.4		58	8.7	3.3	579	8.7	2.2	
	<b>6.75</b>	<b>7</b>	44	7.6	3.8	444	7.6	2.6		44	11.3	2.5	444	11.3	1.7	
2	<b>13.73</b>	<b>14</b>	22	14	6.1	218	14.4	4.2	3000	22	21.6	4.1	218	21.6	2.8	3000
	15.88	16	19	17	5.3	189	16.7	3.6		19	25.0	3.5	189	25.0	2.4	
	18.36	18	16	19	4.6	163	19.3	3.1		16	28.9	3.1	163	28.9	2.1	
	19.20	19	16	20	4.4	156	20	3.0		16	30	2.9	156	30	2.0	
	22.20	22	14	23	3.8	135	23	2.6		14	35	2.5	135	35	1.7	
	<b>25.01</b>	<b>25</b>	12	26	3.4	120	26	2.3		12	39	2.2	120	39	1.5	
	26.85	27	11	28	3.1	112	28	2.1		11	42	2.1	112	42	1.4	
	28.93	29	10	30	2.9	104	30	2.0		10	46	1.9	104	46	1.3	
	34.97	35	8.6	37	2.4	86	37	1.6		8.6	55	1.6	86	55	1.1	
	<b>45.56</b>	<b>46</b>	6.6	48	1.9	66	48	1.3		6.6	72	1.2	66	72	0.8	
3	50.89	51	5.9	50	3.6	59	50	2.4	3000	5.9	75	2.4	59	75	1.6	3000
	58.85	59	5.1	58	3.1	51	58	2.1		5.1	87	2.0	51	87	1.4	
	<b>68.06</b>	<b>68</b>	4.4	67	2.7	44	67	1.8		4.4	100	1.8	44	100	1.2	
	71.16	71	4.2	70	2.5	42	70	1.7		4.2	105	1.7	42	105	1.1	
	78.71	79	3.8	77	2.3	38	77	1.6		3.8	116	1.5	38	116	1.0	
	<b>92.70</b>	<b>93</b>	3.2	91	1.9	32	91	1.3		3.2	136	1.3	32	136	0.9	
	95.17	95	3.2	93	1.9	32	93	1.3		3.2	140	1.3	32	140	0.9	
	99.50	100	3.0	98	1.8	30	98	1.2		3.0	146	1.2	30	146	0.8	
	107.20	107	2.8	105	1.7	28	105	1.1		2.8	158	1.1	28	158	0.8	
	115.07	115	2.6	113	1.6	26	113	1.1		2.6	169	1.0	26	169	0.7	
	123.97	124	2.4	121	1.5	24	121	1.0		2.4	182	1.0	24	171	0.7	
	129.62	130	2.3	127	1.4	23	127	0.9		2.3	191	0.9	23	171	0.7	
	139.13	139	2.2	136	1.3	22	136	0.9		2.2	205	0.9	22	171	0.7	
	149.90	150	2.0	147	1.2	20	147	0.8		2.0	220	0.8	20	171	0.7	
	<b>168.84</b>	<b>169</b>	1.8	165	1.1	18	165	0.7		1.8	248	0.7	18	171	0.7	
	181.24	181	1.7	178	1.0	17	171	0.7		1.7	250	0.7	17	171	0.7	
195.26	195	1.5	191	0.9	15	171	0.7	1.5	250	0.7	15	171	0.7			
236.09	236	1.3	231	0.8	13	171	0.7	1.3	250	0.7	13	171	0.7			
<b>307.54</b>	<b>308</b>	1.0	250	0.7	9.8	171	0.7	1.0	250	0.7	9.8	171	0.7			

**Rapporti preferenziali**  
*Preferred ratios*

**Attenzione: superamento della coppia nominale supportata dal riduttore per servizio S1.**  
**Contattare il ns. servizio tecnico**  
**Attention: rated torque withstood by gear reducer for service in S1 is exceeded.**  
**Please, contact our technical office.**



**P81 con motore brushless**

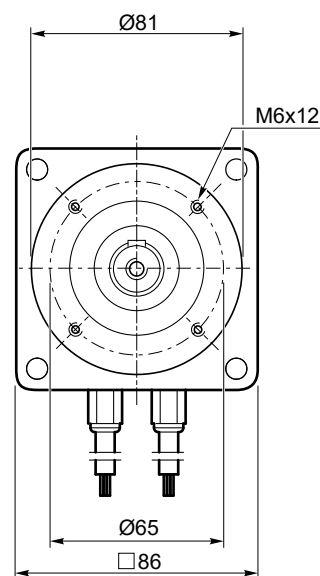
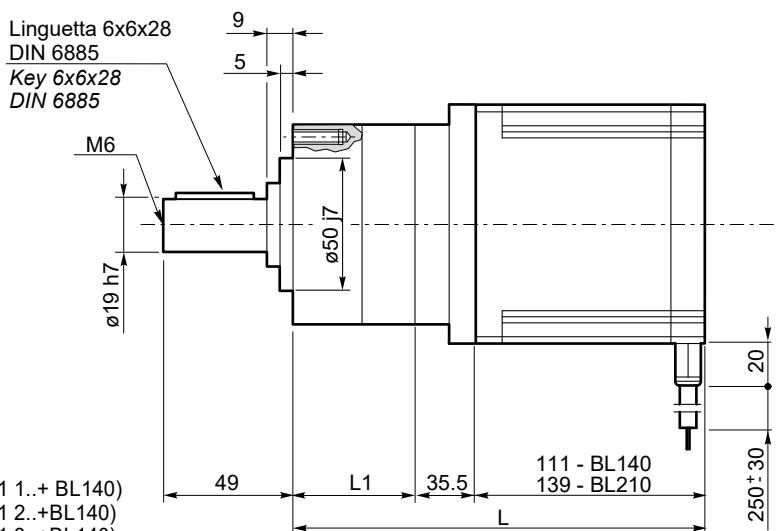
**P81 with brushless motor**

Tipo Type	Numero di poli Number of poles	Numero di fasi Number of phase	Tensione Rated voltage [ V ]	Numero di giri Rated speed [ rpm ]	Coppia nominale Rated torque [ Nm ]	Potenza nominale Rated power [ W ]
BL140.480	8	3	48	3000	1.4	440
BL210.480	8	3	48	3000	2.1	660
Tipo Type	Coppia massima Peak torque [ Nm ]	Corrente nominale Rated current [ A ]	Resistenza Resistance [ ohm ]	Induttanza Inductance [ mH ]	Corrente massima Peak current [ A ]	Peso Weight [ kg ]
BL140.480	2.8	13.0	0.16	0.5	26	3.15
BL210.480	4.2	18.7	0.115	0.31	37	4.2

Azionamenti Drives

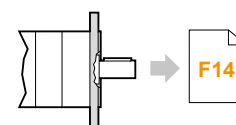


**P81..  
+  
BL140.480  
BL210.480**



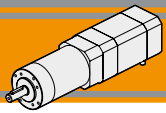
- 5.0 (P81 1..+ BL140)
- 5.7 (P81 2..+BL140)
- 6.4 (P81 3..+BL140)
- 6.0 (P81 1..+BL210)
- 6.7 (P81 2..+BL210)
- 7.4 (P81 3..+BL210)

P81	Ns	L1	BL 140.480	BL 210.480
			L	L
	1	59	205.5	233.5
	2	81	227.5	255.5
	3	103	249.5	277.5



**P81.. AS...**

**BLP**



# BLP

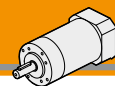
## Motoriduttori brushless CC epicicloidali Brushless DC planetary gearmotors

**Dati tecnici**
 $n_1 = 3000 \text{ rpm}$ 
**Technical data**

Ns	ir	in	P52			P62			P81		
			R <sub>d</sub>	M <sub>n2</sub> [Nm]	R <sub>2</sub> [N]	R <sub>d</sub>	M <sub>n2</sub> [Nm]	R <sub>2</sub> [N]	R <sub>d</sub>	M <sub>n2</sub> [Nm]	R <sub>2</sub> [N]
1	3.70	4	0.80	4	200	0.80	8	240	0.80	20	400
	4.28	4									
	5.18	5									
	6.75	7									
2	13.73	14	0.75	12	320	0.75	25	360	0.75	60	600
	15.88	16									
	18.36	18									
	19.20	19									
	22.20	22									
	25.01	25									
	26.85	27									
	28.93	29									
	34.97	35									
	45.56	46									
3	50.89	51	0.70	25	450	0.70	50	520	0.70	120	1000
	58.85	59									
	68.06	68									
	71.16	71									
	78.71	79									
	92.70	93									
	95.17	95									
	99.50	100									
	107.20	107									
	115.07	115									
	123.97	124									
	129.62	130									
	139.13	139									
	149.90	150									
	168.84	169									
	181.24	181									
195.26	195										
236.09	236										
307.54	308										

**Rapporti preferenziali per le taglie P52, P62 e P81.**  
*Preferred ratios for sizes P52, P62 and P81.*

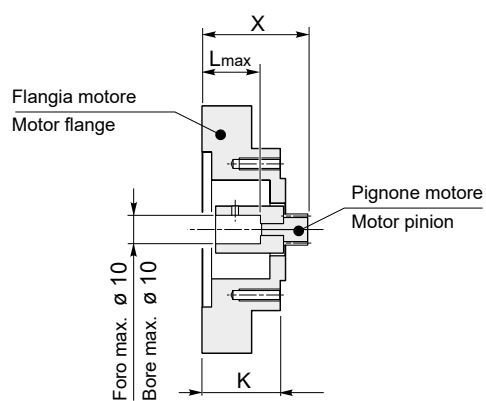
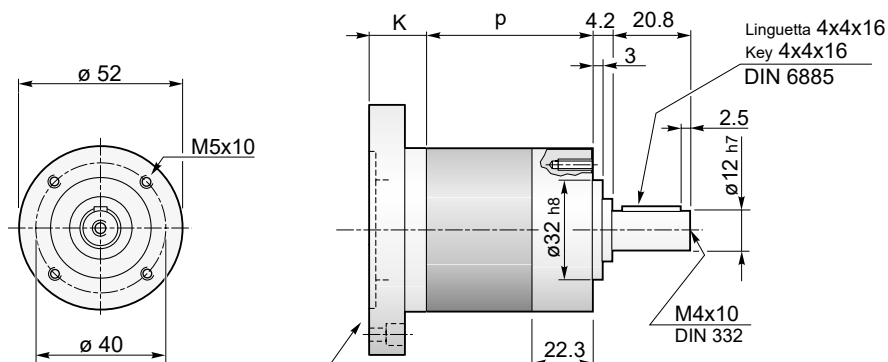
Disponibili 4 stadi con rapporti fino a 2076 / Available 4 stages with ratio up to 2076



Dimensioni P con flange motore AS

P dimensions with motor flanges AS

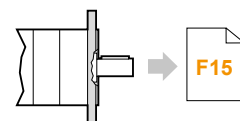
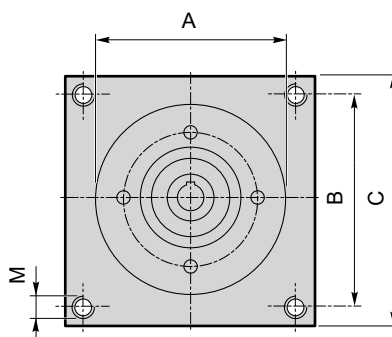
P52 - U - AS...



Lo spessore della flangia è variabile in funzione delle diverse lunghezze dell'albero motore.

Flange's thickness may vary depending on motorshaft's length.

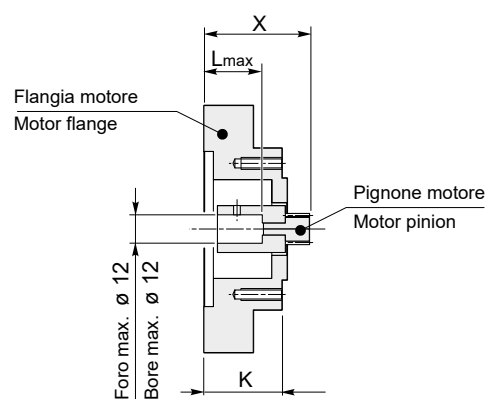
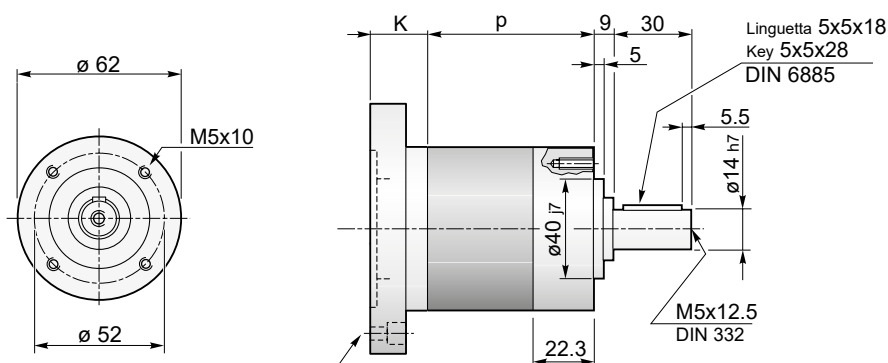
Dimensioni / Dimensions							
AS	A	B	C	M	K	L <sub>max</sub>	X
AS394	38.1	47.1	57	M5	31.5	23	41.5
...	...	...	...	...	...	...	...



P52.. C...

		Lunghezza riduttore Gearbox length	
		P	
P52...	1	46	0.7
	2	60	0.9
	3	74	1.1

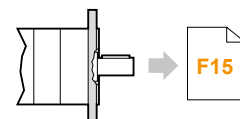
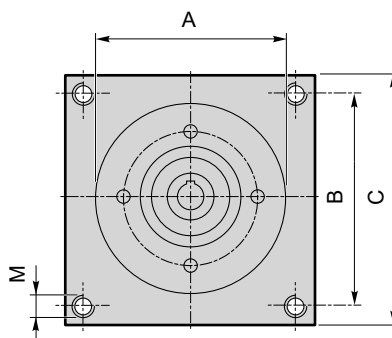
P62 - U - AS...



Lo spessore della flangia è variabile in funzione delle diverse lunghezze dell'albero motore.

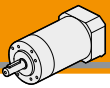
Flange's thickness may vary depending on motorshaft's length.

Dimensioni / Dimensions							
AS	A	B	C	M	K	L <sub>max</sub>	X
AS389	73	69.6	86	M5	31.5	23	44.3
...	...	...	...	...	...	...	...



P62.. C...

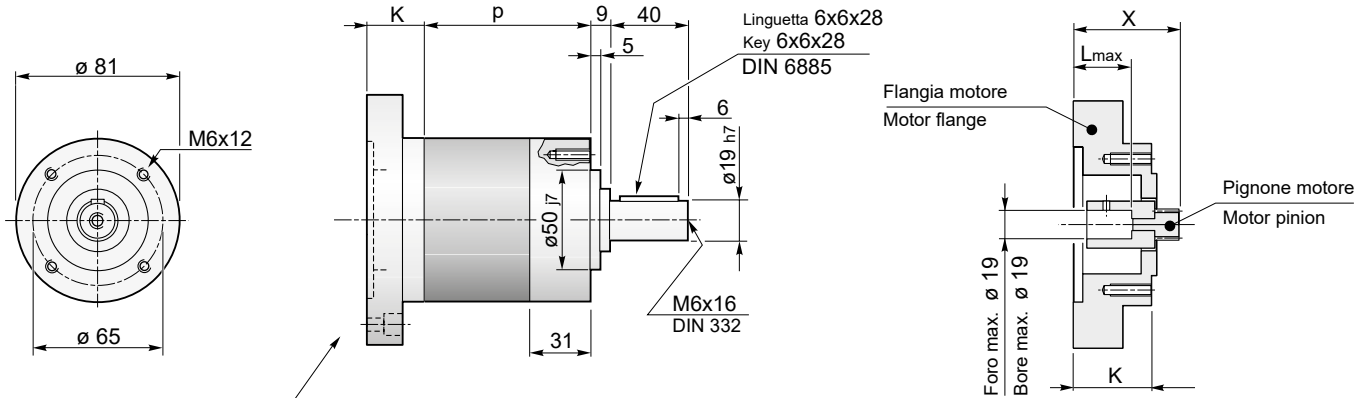
		Lunghezza riduttore Gearbox length	
		P	
P62...	1	46	0.8
	2	62	1.2
	3	78	1.6



Dimensioni P con flange motore AS

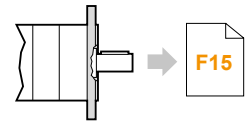
P dimensions with motor flanges AS

P81 - U - AS...



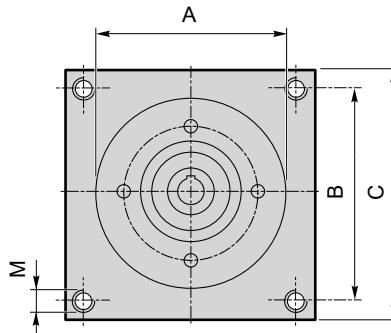
Lo spessore della flangia è variabile in funzione delle diverse lunghezze dell'albero motore.

Flange's thickness may vary depending on motorshaft's lenght.



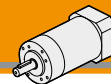
P81.. C...

Dimensioni / Dimensions							
AS	A	B	C	M	K	L <sub>max</sub>	X
AS390	73	69.6	86	M5	35.5	23	51.8
...	...	...	...	...	...	...	...



		Lunghezza riduttore Gearbox length	Kg
		P	
P81...	1	59	1.8
	2	81	2.5
	3	103	3.2

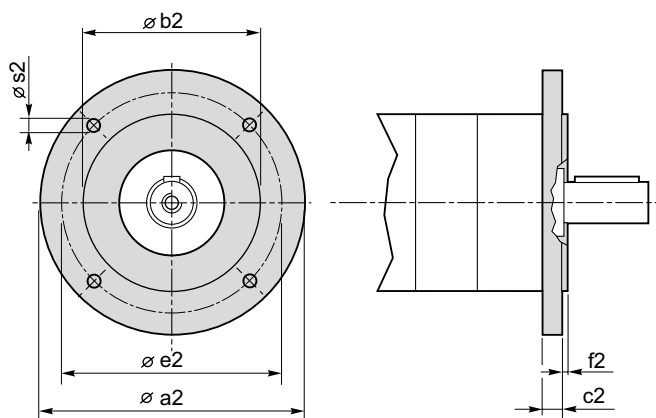




Dimensioni flange uscita

Output flange dimensions

P.. C..



Flange uscita / Output flanges							
P	a2	b2	c2	e2	f2	s2	Flangia Flange
52	80	50 j7	9	65	2.5	M5	C80
	90	60 j7	9	75	2.5	5.5	C90
	105	70 j7	9	85	2.5	6.5	C105
	120	80 j7	9	100	3.0	6.5	C120
62	80	50 j7	9	65	2.5	M5	C80
	90	60 j7	9	75	2.5	5.5	C90
	105	70 j7	9	85	2.5	6.5	C105
	120	80 j7	9	100	3.0	6.5	C120
81	90	60 j7	9	75	2.5	M5	C90
	105	70 j7	9	85	2.5	M6	C105
	120	80 j7	9	100	3.0	6.5	C120





**MA TRANSTECNO S.A.P.I. DE C.V.**  
 Av. Mundial # 176, Parque Industrial  
 JM Apodaca, Nuevo León,  
 C.P. 66600  
 MÉXICO  
 T +52 8113340920  
 info@transtecno.com.mx  
 www.transtecno.com.mx



**TRANSTECNO SRL**  
 Via Caduti di Sabbiano, 11/D-E  
 40011 Anzola dell'Emilia (BO)  
 ITALY  
 T+39 051 64 25 811  
 F +39 051 73 39 04  
 sales@transtecno.com  
 www.transtecno.com



**HANGZHOU TRANSTECNO POWER  
 TRANSMISSIONS CO LTD**  
 No.4 Xiuyan Road Fengdu Industry Zone  
 Pingyao Town Yuhang District  
 Hangzhou City, Zhejiang Province  
 311115 – CHINA  
 T +86 571 86 92 02 60  
 F +86 571 86 92 18 10  
 info-china@transtecno.com  
 www.transtecno.cn



**TRANSTECNO U.S.A. LLC**  
 5440 S.W. 156th Place Miami,  
 FL 33185 - USA  
 Tel: +1 (305) 220-4423  
 Fax: +1 (305) 220-5945  
 usaoffice@transtecno.com



**TRANSTECNO B.V.**  
 Ind. terrein Wieken/Vinkenhoeft  
 De Stuwdam,43  
 3815 KM Amersfoort - NETHERLANDS  
 Tel: +31(0) 33 45 19 505  
 Fax: +31(0) 33 45 19 506  
 info@transtecno.nl  
 www.transtecno.nl



**SALES OFFICE INDIA**  
 A/10, Anagha, S.N. Road, Mulund (W) Mumbai  
 400080 - INDIA  
 Tel: +91 9820614698  
 Fax-Italy: +39 051 733 904  
 indiaoffice@transtecno.com



**SALES OFFICE BRAZIL**  
 Rua Dr. Freire Alemão 155 / 402 - CEP. 90450-060  
 Auxiliadora Porto Alegre RS - BRAZIL  
 Tel: +55 51 3251 5447  
 Fax: +55 51 3251 5447  
 Mobile: +55 51 811 45 962  
 braziloffice@transtecno.com  
 www.transtecno.com.br



**TRANSTECNO IBÉRICA  
 THE MODULAR GEARMOTOR, S.A.**  
 C/Enginy, 2 Nave 6 - 08850 Gavà (Barcelona) - SPAIN  
 Tel: +34 931 598 950  
 info@transtecno.es  
 www.transtecno.es



**SALES OFFICE SOUTH KOREA**  
 D-304 Songdo BRC Smart Valley 30, Songdomirae-ro,  
 Yeonsu-gu, Incheon, 406-840 - KOREA  
 Tel: +82 70 8288 2107  
 Fax: +82 32 815 2107  
 Mobile: +82 10 5094 2107  
 koreaoffice@transtecno.com



**SALES OFFICE FRANCE**  
 12 Impasse des Mûriers  
 38300 Ruy - FRANCE  
 Tel: +33 (0) 6 85 12 09 87  
 Fax-Italy: +39 051 733 904  
 franceoffice@transtecno.com  
 www.transtecno.fr



**SALES OFFICE OCEANIA**  
 44 Northview drive, Sunshine west 3020  
 Victoria - AUSTRALIA  
 Ph +61 03 9312 4722  
 Fax +61 03 9312 4714  
 Mobile: +61 0438060997  
 oceaniaoffice@transtecno.com  
 www.transtecno.com.au

**TRANSTECNO®**  
 the modular gearmotor

www.transtecno.com